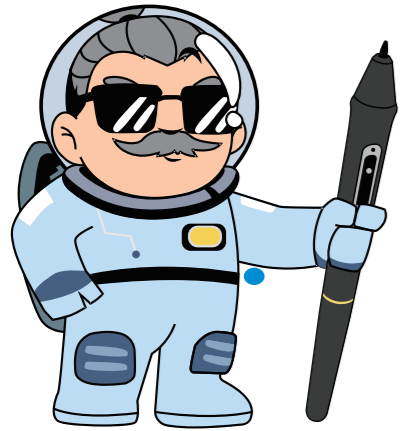


## 快速指南

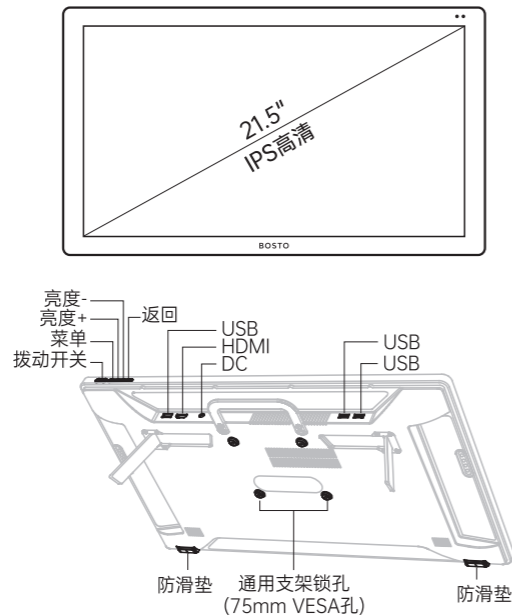
BST-X7数位屏



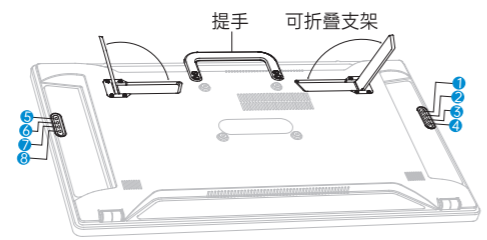
亲爱的顾客：

感谢您对BOSTO品牌的信赖和支持，我们将竭诚为您服务，如在使用过程中有任何问题，欢迎随时与我们联系。

### 1 产品外观



- 1 画笔放大
- 2 画笔缩小
- 3 画布放大
- 4 画布缩小
- 5 抓手
- 6 保存
- 7 撤销
- 8 重做



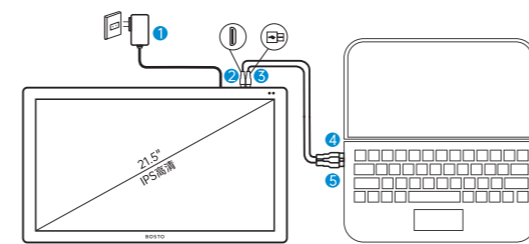
### 2 配件清单



### 3 连接数位屏与电脑

按图示连接数位屏和电脑：

- 1 DC
- 2 HDMI
- 3 USB
- 4 HDMI
- 5 USB



### 4 驱动安装

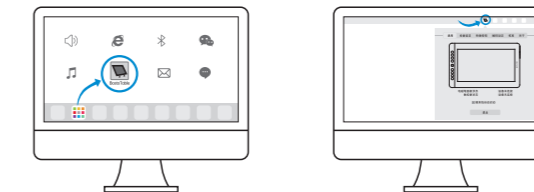
- 1、驱动安装前准备：卸载其它手写驱动，关闭当前绘画软件关闭杀毒软件和防火墙，以管理员权限操作。
- 2、下载驱动：<http://www.bostotablet.com/down.aspx>

### 3、安装完成后，打开驱动

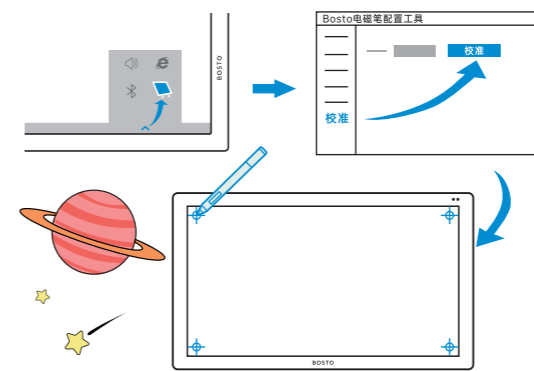
① Windows：在桌面或者右下角任务栏可找到图标(Bosto Digitizer)



② Mac：在“LaunchPad”里可找到图标(Bosto Tablet)，点击图标后，在右上角导航栏找到小图标(如下图)，点击后即可打开驱动设置面板。



### 5 屏幕校准

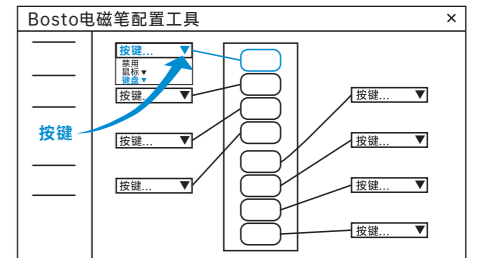


### 6 设置触控(仅限有触控型号)



注：勾选“禁用单点触摸”功能可极大程度降低误触操作。

### 7 设置按键



注：快捷键可自定义设置

设置为鼠标左右键：



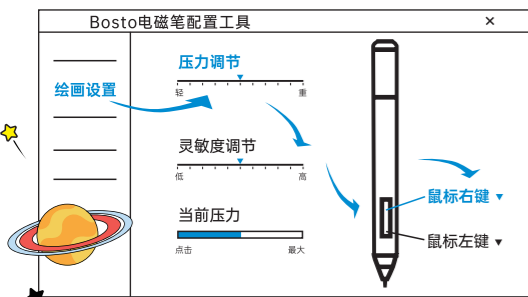
设置为键盘按键：



设置为组合按键：



### 8 设置压感笔



压力调节：画出线的最小笔压  
滑块往右移，画出线所需的笔压更大。

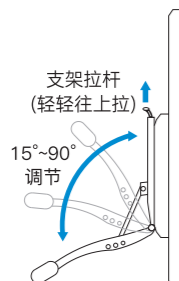
灵敏度调节：画线时，对应的线的粗细变化幅度  
滑块往右移，同等笔压对应的线更粗。

### 9 更换笔尖



### 10 调节支架(选配)

角度调节：  
为方便设计人员使用，可通过拉起Stand顶部的扳扣，释放机关向上或向下调整角度，整个过程可以单手操作完成。  
最大可15°~90°可调节适应各种角度需求。

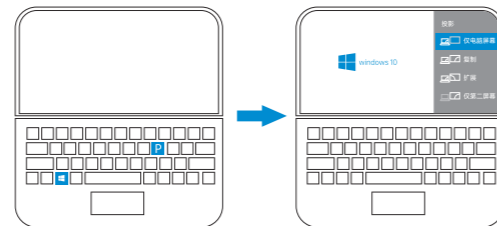


注：调节支架需自行购买

### 11 常见售后问题

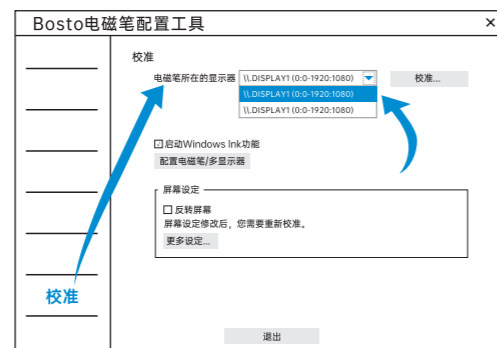
#### 一、屏幕复制扩展模式如何设置？

① 可以按键盘上的windows按键+P键来进行设置，选择复制或扩展模式。(也可以在电脑桌面上鼠标右键分辨率设置在里面修改扩展或者复制模式)



#### 二、扩展模式下光标无法移动到数位屏上，如何设置？

① 打开驱动面板校准选项，选择数位屏屏幕进行校准，

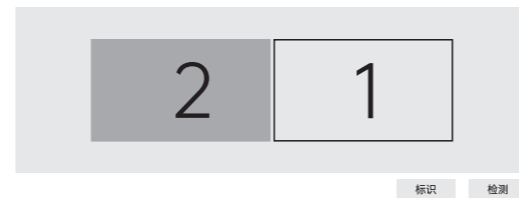


② 如校准完毕后问题依旧存在。需要在电脑桌面上鼠标右键显示设置，将数位屏显示的屏幕移动到主显示器左边。

#### 显示

重新排列显示器

选择下面的某一显示器更改其配置，长按(或选择)一个显示器，然后通过拖动方式来重新排列。



③ 设置完毕后打开驱动面板校准页面，点击配置电磁笔/多显示器



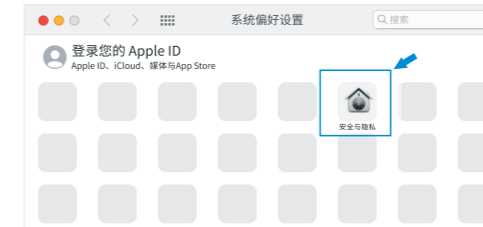
④ 配置文件后按回车切换屏幕，当配置文字出现在数位屏屏幕上的时候，用电磁笔点击数位屏就可以将光标切换过来了。

用你的触点点击此屏幕将其设置为平板电脑屏幕。

如果不是平板电脑屏幕，请按Enter转到下一个屏幕，若要关闭该工具，请按Esc。

#### 三、笔有反应光标可以跟随点击没有效果/笔没有反应(限MAC系统)

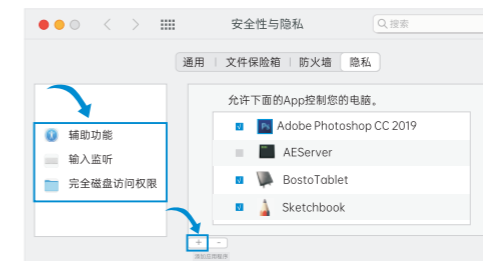
① 打开 > “系统偏好设置” > 找到“安全与隐私” > 点击“解锁”。



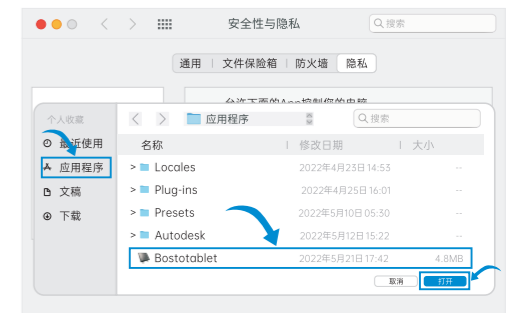
② 打开“安全与隐私” > 点击右上角“解锁” >，输入密码“解锁”即可。



③ 找到“辅助功能”“输入监听”“完全磁盘访问权限” > 点击“+”



④ 找到“Bostotablet”应用程序，>点击“打开”即可。



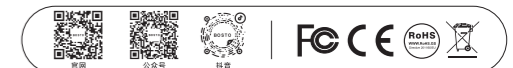
深圳市博学通科技有限公司

全国服务热线：0755-29691514 邮箱：fanly@bostotablet.com

QQ：2402578413 网站：www.bostotablet.com

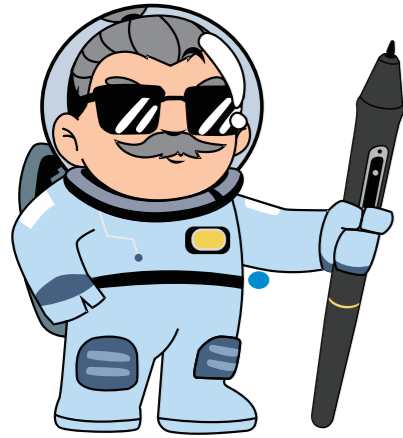
生产地址：广东省东莞市长安镇振安中路689号安力科技园B6栋北门四楼

邮编：523859



## Quick Guide

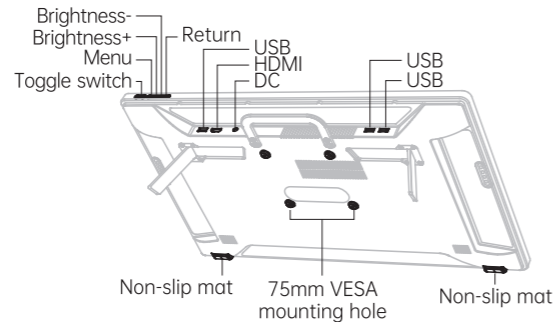
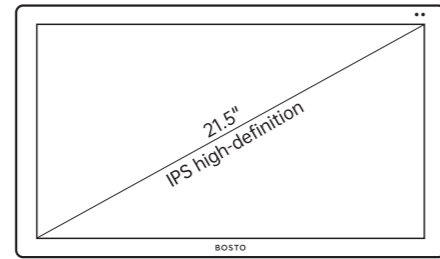
BST-X7 Pen Display



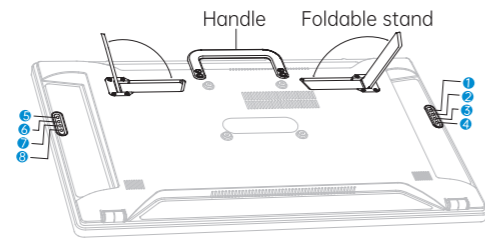
Dear customers :

Thank you for your trust and support of BOSTO brand, we will serve you wholeheartedly, please feel free to contact us if you have any questions during the use.

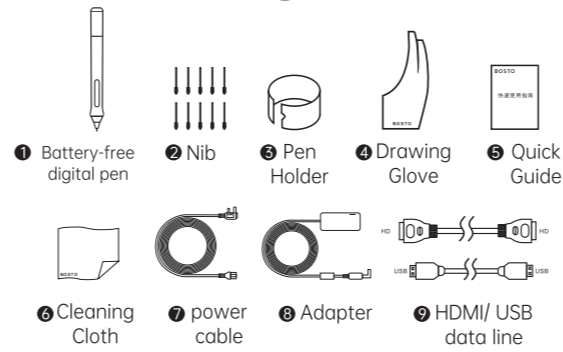
### 1 OVERVIEW



- 1 Brush Size +
- 2 Brush Size -
- 3 Canvas Zoom In
- 4 Canvas Zoom out
- 5 Hand
- 6 Save
- 7 Undo
- 8 Redo



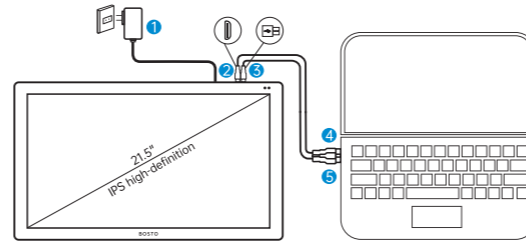
### 2 ACCESSORIES



### 3 CONNECTION

Connect your BOSTO tablet with the computer as shown :

- 1 DC
- 2 HDMI
- 3 USB
- 4 HDMI
- 5 USB

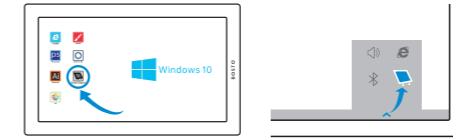


### 4 DRIVER INSTALLATION

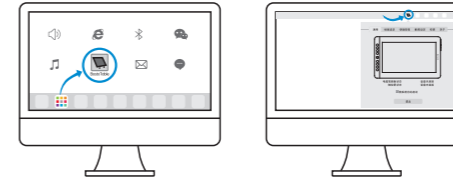
1. Preparation before installation : Uninstall and remove other graphic tablet/monitor driver installed in your computer, quit all running programs, disable any anti-virus software and firewall temporarily, Installing the driver as administrator.
2. Download the driver from : <http://www.bostotablet.com/down.aspx>

### 3. After a successful installation

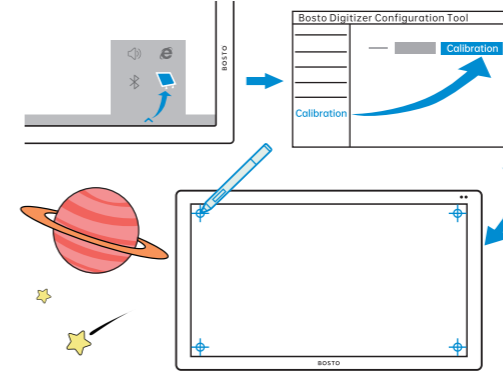
- 1 Windows: You can find the "Bosto Digitizer" Icon on the desktop or task bar bottom right corner of your computer.



- 2 Mac: You can find "Bosto Tablet" icon in the "Launchpad", after click it, you will see the small icon on the top right navigation bar (as shown in the picture below), click to open the driver settings panel.

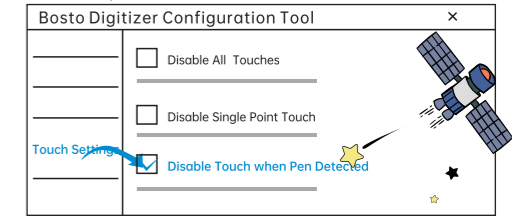


### 5 SCREEN CALIBRATION



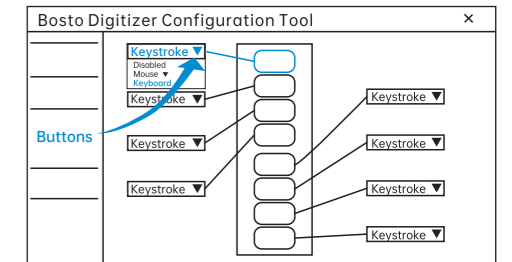
### 6 FINGER-TOUCH SETTINGS

(Only for BST-X7-1)



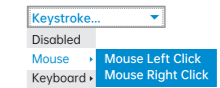
Note: select the "Disable single point touch" can greatly reduce false operation

### 7 SET THE KEYS

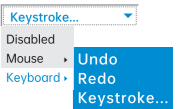


Note: Shortcut keys can be customized

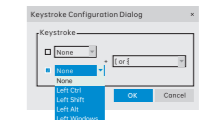
Set to left and right mouse buttons:



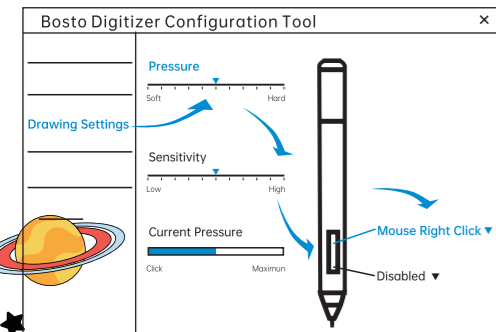
Set as keyboard key:



Set as key combination:



### 8 SET UP THE PRESSURE SENSITIVE PEN



Pressure adjustment: drawing the Minimum pen pressure of lines Move the slider to the right, more pressure required for drawing the lines

Sensitivity adjustment: when drawing, the change ranges of the thickness for the corresponding lines. Move the slider to the right, the line is thicker for the same pressure.

### 9 REPLACE PEN NIB



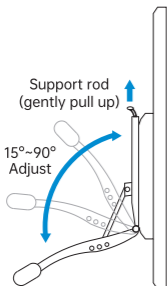
### 10 Stand angle adjusting(Optional)

Angle adjust:

For the convenience of users, the angle can be adjusted upward or downward by pulling up the trigger on the top of the Stand and releasing the mechanism. The whole process can be completed by one-handed operation.

Adjustable from 15° to 90° degrees max, meet the requirements for different angles.

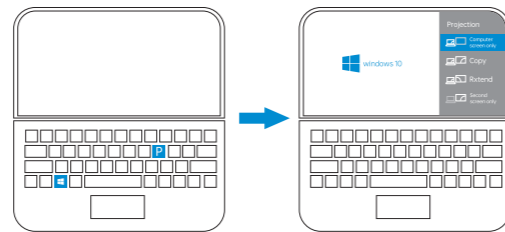
Note: the adjusting bracket should be purchased by yourself



### 11 After-sales common problems

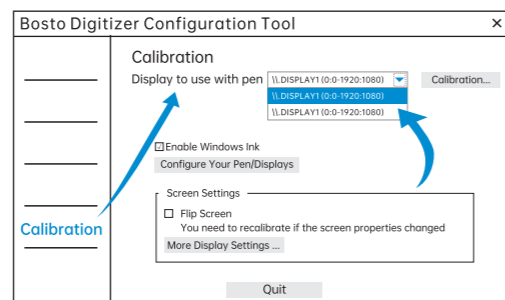
#### 1. How to set up screen copy extension mode?

- 1 You can press the Windows key and P key, select copy or expand mode, or you can also click the right key of mouse when under the computer desktop page to chose the resolution, then modify the extension or copy mode in it.



#### 2. How to set up when the cursor cannot move to the digital screen in extended mode?

- 1 Turn to the drive panel calibration page, click the calibration option at the bottom left and choose the correct digital screen.

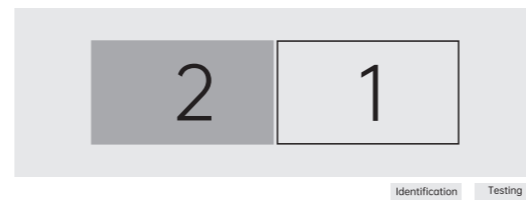


- 2 The problem did not solved after above steps, back to the computer desktop page and click right button of mouse, remove the digital screen to the left of master display.

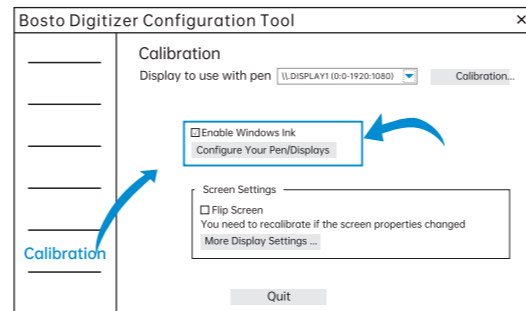
### Display

Re-arrange the display.

Deep press or choose any of below display, hold and move it to your ideal place.



- 3 Open the drive standardizing page after setting, click "Configure Your Pen/Displays".



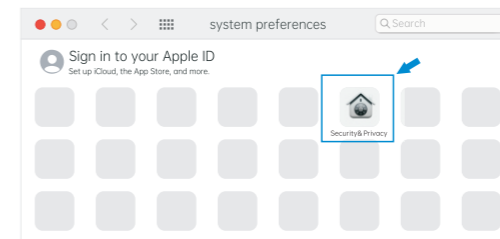
- 4 After configuring the file, press Enter to switch the screen, when configuration text appears on the pen display screen, Click on the pen display with the pen to switch the cursor.

Tap this screen with your stylus to set it as a tablet screen.

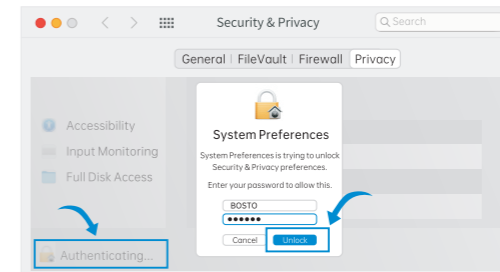
If it is not a tablet screen, change to next screen by press Enter key. Press Esc key to close this function.

### 3. The pen is moveable and the cursor can move with pen but no use to click by pen/pen without function (MAC system only)

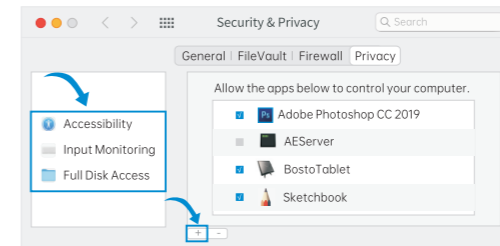
- 1 Open>"system preferences">find "Security and privacy">click"Unlock"



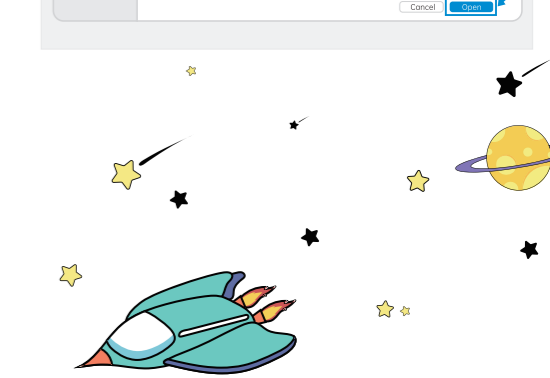
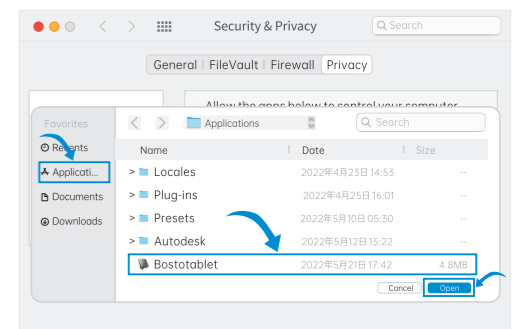
- 2 Click"Security and privacy">click the bottom right-hand corner"Unlock">enter the password and it be unlocked.



- 3 Find the "Accessibility" "Input Monitoring" "Full Disk Access" > click "+"



- 4 Open the application page, choose "Bostotablet" and click"Open"



ShenZhen Bosto Technology Co., Ltd.

National Service Hotline: 0755-29691514 Email: fanly@bostotablet.com  
 QQ: 2402578413 Website: www.bostotablet.com  
 Address: Bldg B6, Anli Technology Park, Zhen'an Road No. 689, Chang'an town, Dongguan City, Guangdong, China 523859

